

**ROUTE MAP**  
NOT TO SCALE

# VIMALA ENCLAVE

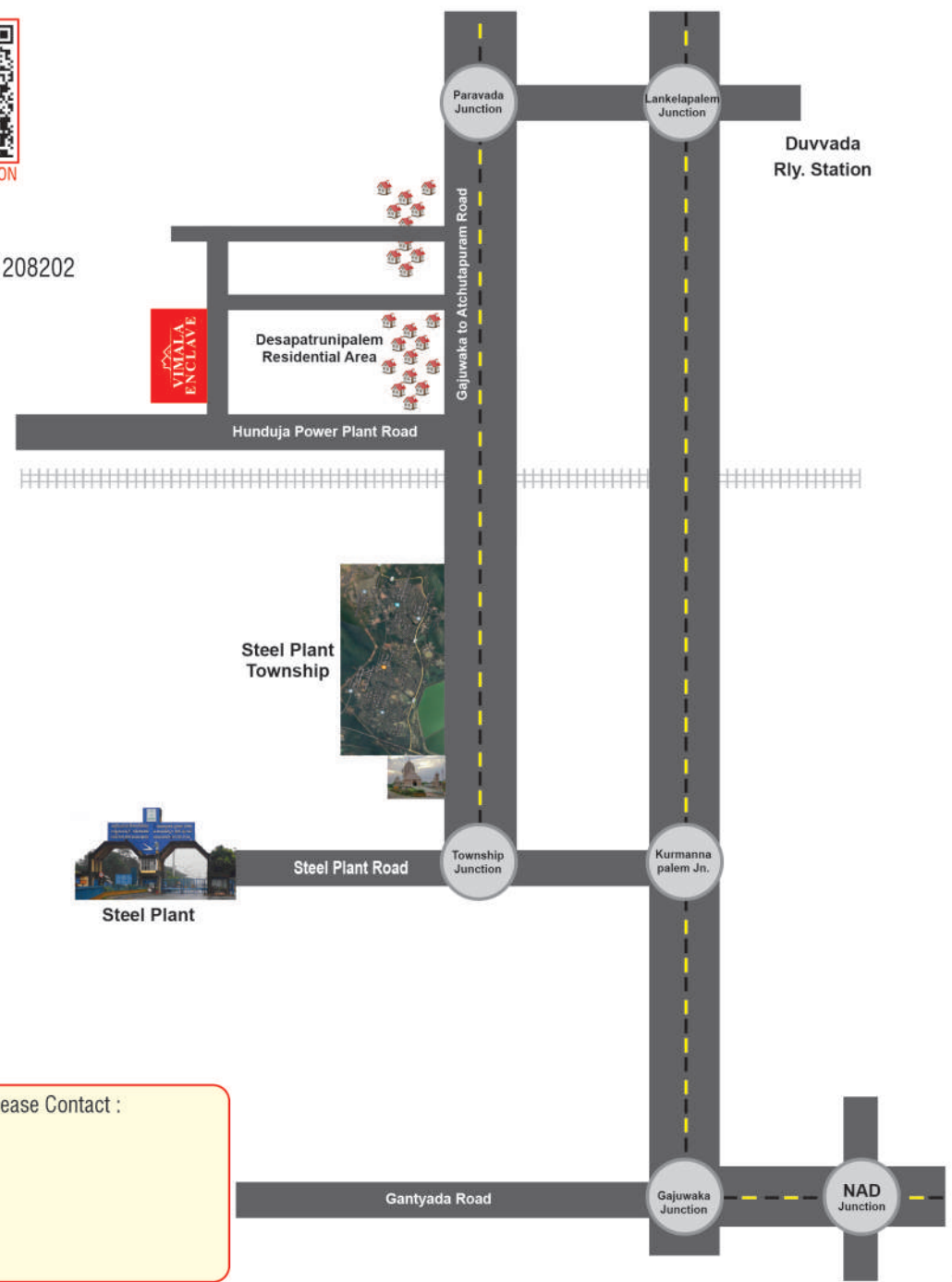
@ Desapatrunipalem Jn., Paravada



SCAN FOR LOCATION



17.6254937, 83.1208202



For more Details Please Contact :



# VIMALA ENCLAVE

@ Desapatrunipalem Jn., Paravada



## KRANTHI PROPERTIES

PROMOTERS | BUILDERS | DEVELOPERS

Regd. Office : Kranthi Arcade, #7-6-17/3, 3rd floor, NH-5 Road, Chattivanipalem, Gajuwaka, Visakhapatnam - 530 026.  
Corp. Office : Akshara Complex, Flat No. 301, 3rd floor, Beside Tilak Showroom, 5th Lane, Dwarakanagar, Visakhapatnam - 530 016.  
Branch Office: BRTS Road, Chinamushidiwada Bus Stop Backside, Pendurthi, Visakhapatnam - 530 047.

\*Note : This Brochure is purely a conceptual presentation and not for legal offering. The Promoters reserve the right to make changes in plans as deemed fit.



## KRANTHI PROPERTIES

PROMOTERS | BUILDERS | DEVELOPERS

H.O. : Gajuwaka | C.O.: Dwarakanagar | B.O.: Pendurthi



## About us >>>>

**Kranthi Properties** take this opportunity to introduce ourselves as a promoters & Layout Developers, registered organisation and based at Visakhapatnam. We strive hard to maintain quality and keep our promise to the society. The company previous ventures have been completed successfully, our services lies in little phenomenon "Collective work with strong Commitment" We have 23 years experience in Real Estate Field, with a Professionally managed team. We are developing ventures and Housing Projects for the people with high standard developments & reasonable price.

The true joy of living  
- Today, tomorrow and forever.



# VIMALA ENCLAVE

@ Desapatrunipalem Jn., Paravada  
Approved Layout is Located at Survey No. 12/2  
Pentaseema Bonangi (V), Paravada (M)  
Anakapalle Dist.,

## Project Highlights

- The Layout is being developed as per VMRDA norms.
- Regular city bus facility from all the nook and corner of the city.
- All 40 feet wide black top roads.
- Open Drainage System & Electricity will be provided.
- Avenue Plantation, Garden & Parks
- Arch with Gate and Compound wall for the entire layout.
- Underground water is portable and plenty at a depth of 40 feet.
- This Layout is very near to a Grate Tourism place, beautiful &
- Spacious beach of Pudimadaka & Kondakarla Ava.
- Surrounded by Independent Houses.
- This Layout is nearer to Steel Plant & Atchutapuram SEZ (Brandix, BARC, HPCL, Uniparts, Pilkington, Abhijit Ferro Alloys) Naval Base, Petro Corridor (PCPIR).

Proposed 40 Feet Road in Master Plan



S. No.	Size of Plot	Sq. Yds.
1	30" X 45"	150.00
2	30" X 50"	166.67
3	40" X 60"	266.67

\*Corner Plots may be in different sizes

